



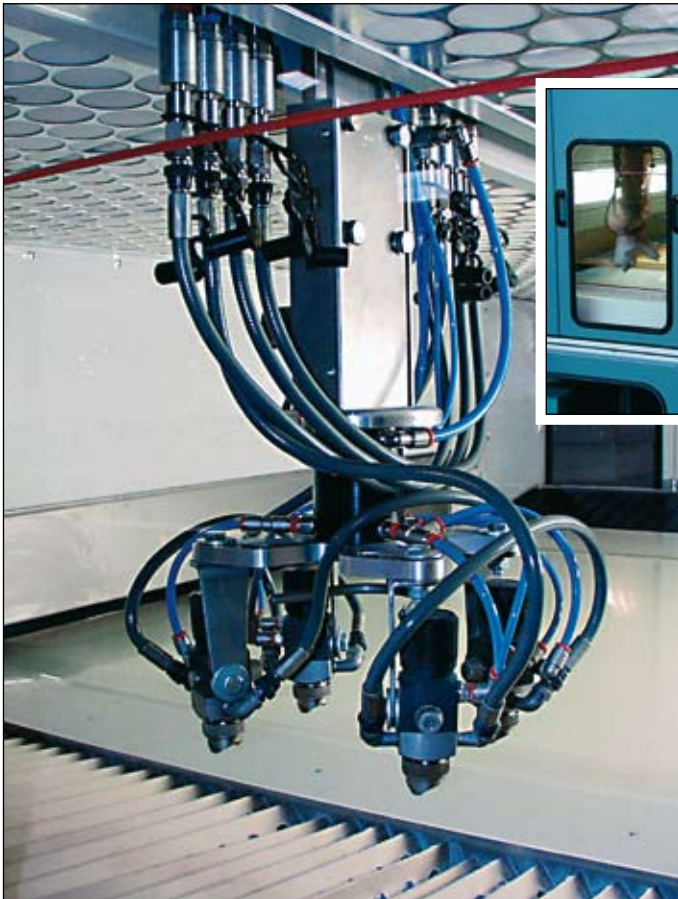
Finishing lines



Finishing lines



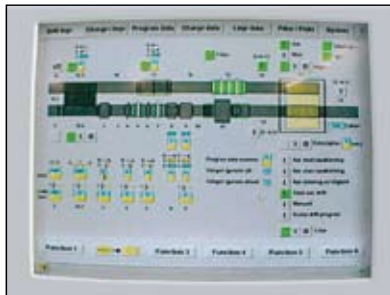
For almost 40 years Aagaard-Finnrose A/S has delivered more than 500 finishing lines for customers worldwide.



Aagaard-Finnrose A/S delivers all systems as completely turnkey projects, from inquiry to handing over of the finished project at the customer.



Fully automatic finishing lines for kitchens, with computer control of the whole process.



Machining



Rough wood



Sawing



Moulding



Laminated wood

Handling



Stacking



Assembly



Fitting



Packing

Application



Windows



Doors



Furniture

DRYING OVENS

Our comprehensive programme includes following:

- Systems for staining and oil application
- Spraying machines
- Wide range of drying ovens such as:
tunnel dryers, jet dryers, vertical dryers,
IRM and UV drying
- Spray booth with dry and wet filter
- Flow-coating
- Material handling equipment



Above picture shows a horizontal path system for lacquering and drying of inside ceiling panels.



Vertical dryers are suitable for drying of lacquers with long evaporation time and high content of solid matters, e.g. water based lacquers and PUR-lacquers.



Moulding

Laminated wood



Stacking



Windows



Doors



Furniture

Finishing lines



Aagaard speed dryer type FODO with infrared lamp to cure internal doors.



Detail of the speed dryer showing the jets and placement of IRM curing lamps.



Fully automatic finishing lines for doors and kitchen cabinets.



Machining



Rough wood



Sawing



Moulding



Laminated wood

Handling



Stacking



Assembly



Fitting



Packing

Application



Windows



Doors



Furniture

DRYING OVENS

Complete line for finishing
of wood components
to the building industry.



Aagaard sander with Flex-Trim
sanding units and a double sided
cleaning machine.



Finishing line for kitchen doors
with 1 section vertical dryer.



Vertical dryer constructed with 6 floors saving space
for the line, so that the lines will be shorter.
Available both as flash off and drying oven.



Moulding

Laminated
wood



Stacking



Windows



Doors



Furniture

Finishing lines



The Aagaard - Finnrose A/S finishing lines are used in wood working and furniture industry producing e.g. furniture, doors, windows, floors, wood components and etc. All our systems are known worldwide for their very high quality level, great reliability and good service.

Spray machine with recycling of the paint for window components.



Complete line for spraying and drying of window elements.

Machining



Rough wood



Sawing



Moulding



Laminated wood

Handling



Stacking



Assembly



Fitting



Packing

Application



Windows



Doors



Furniture



Aagaard double sided cleaning machine for kitchen doors placed in line to clean off dust before the spray machine.

Double angle transfer unit in a line for window components.



Complete line for the UV-water based lacquering for cabinet doors with 3D UV curing.



Moulding

Laminated wood



Stacking



Windows



Doors



Furniture

Transport equipment

Sheet feeder for feeding of parts in the finishing line is a flexible and simple solution in case of many different types of parts.



Special angle transfer for large wood mouldings.



Double angle transfer for lists and narrow wood mouldings for feeding in list spraying systems from spray systems.

Machining



Rough wood



Sawing



Moulding



Laminated wood

Handling



Stacking



Assembly



Fitting



Packing

Application



Windows



Doors



Furniture

STACK TURNERS, PANEL TURNERS



Stack turner for turning of whole pallets with parts.

Panel turner during turning of parts.



Panel turner integrated in double angel transfer.



Moulding



Laminated wood



Stacking



Windows



Doors



Furniture

Transport equipment



Automatic feeder for feeding of parts in finishing line.



Stacking down of parts with destacker after lacquering.



Double angle transfer for 180 degree turning of parts, integrated panel turner in the top.

Machining



Rough wood



Sawing



Moulding



Laminated wood

Handling



Stacking



Assembly



Fitting



Packing

Application



Windows



Doors



Furniture

TRANSPORT EQUIPMENT

FCB chargeoptimizing paths for optimizing of the line capacity.



Transporter type FB.

Panel stacker
type STI.



Sheet feeder type FSI
for charge structure and
feeding of parts in the
finishing line.



Moulding



Laminated
wood



Stacking



Windows



Doors



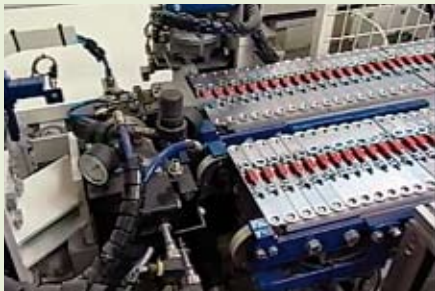
Furniture

OBEL-P GROUP

OBEL-P Automation A/S

Obel-P Automation A/S
Cypresvej 16
DK-7400 Herning - Denmark

tel.: + 45 97 21 78 00
fax: + 45 97 21 78 01
salg@obel-p-automation.dk
www.obel-p-automation.dk



OBEL-P GROUP

Brødbæk & Co. A/S

Brødbæk & Co. A/S
Mølgaardvej 1
DK-7173 Vonge - Denmark

tel.: + 45 75 80 35 99
fax: + 45 75 80 35 81
sales@brodbaek.dk
www.brodbaek.dk



OBEL-P GROUP

Aagaard A/S

Aagaard A/S
Smedevænget 14
DK-9560 Hadsund - Denmark

tel.: + 45 96 53 12 00
fax: + 45 98 57 42 15
mail@aagaard-systems.dk
www.aagaard-systems.dk



OBEL-P GROUP

PL Control ApS

PL Control ApS
Sverigesvej 4
DK-9560 Hadsund - Denmark

tel.: + 45 98 57 20 28
fax: + 45 98 57 50 28
mail@plcontrol.dk
www.plcontrol.dk



AAGAARD-FINNROSE A/S
Smedevænget 14
DK-9560 Hadsund DENMARK

phone +45 96 531 200
fax +45 98 574 215
e-mail: mail@aagaard-systems.dk
www: aagaard-systems.dk

Obel-P Group is a Danish group with companies in Denmark and head office in Brøndby near Copenhagen developing, producing and marketing high technology solutions to the global wood working industry.

The close cooperation between the four companies in Obel-P Group: Obel-P Automation, Brødbæk & Co., Aagaard System and PL Control each with expertise within services and products for wood working industry means a positive synergy when developing new solutions.

